



Caribbean Multihull Challenge

6 + 7 February

Organising Authority: Sint Maarten Yacht Club

Venue: Sint Maarten Yacht Club

Event website: www.smyc.com/caribbean-multihull-challenge

Official Notices, Entry, and Results website: <https://yachtscoring.com/emenu.cfm?eID=12993>

Race Committee Desk: email leonde@smyc.com telephone Leonde Vermeulen +1721 580 1800

Sailing Instructions P SEP

1. Rules

- 1.1 The regattas will be governed by the rules as defined in *The Racing Rules of Sailing 2021-2024*
- 1.2 RRS Appendix T will apply.
- 1.3 No national prescription will apply.
- 1.4 All competing boats in the cruising and racing class shall comply with the *St. Maarten Heineken Regatta Safety and Equipment Regulations* as posted on regatta documents.
- 1.5 All competing boats in the beach cat class have to have a VHF, a 15m long rope and 1 or 2 flairs on board.
- 1.6 For all classes using the CSA Multihull Rating, the CSA multihull rule will apply.
- 1.7 For all classes using the other rule systems, the relevant rules of that rating system will apply.
- 1.8 If there is a conflict between languages the English text will take precedence.

2. Ratings

- 2.1 No rating certificate shall be changed after 1400 on the day before the first scheduled race of each regatta unless such change is expressly permitted in writing by the Technical Committee.
- 2.2 When a rating system offers multiple sail configurations or other alternative ratings, the entrant shall declare the choice to the Technical Committee no later than 1400 on the day before the first scheduled race of each regatta.

3. Safety

- 3.1 No boat shall race with an anchor overhanging the bow or forward crossbeam. Written application made prior to the close of registration for exemption from this requirement may be made to the Racing Director, who may, at his sole discretion, grant exemption from this instruction.
- 3.2 Any boat retiring shall advise the Race Committee by VHF or the Race Committee Desk by telephone. This needs to be done as soon as possible or at the first opportunity that VHF contact or mobile phone contact is possible before leaving the race area.

4. Notices to Competitors

Notices to competitors will be posted on the Official Notices, Entry, and Results website www.yachtscoring.com. There is no physical official notice board.

5. Changes to Sailing Instructions

- 5.1 Any change to the Sailing Instructions will be posted by 0730 on the day it will take effect.
- 5.2 Any change to the schedule will be posted by 1800 on the day before it will take effect.

6. Signals Made Ashore

There will be no signals made ashore.

7. Schedule

Scheduled times of the warning signals for the racing class and the cruising class are as follows:

Port de Plaisance Race Day 1 Saturday 0930

Oris Race Day 2 Sunday 0930

Scheduled times of warning signals for the beachcat class are as follows:

Port de Plaisance Race Day 1 Saturday 0950

Oris Race Day 2 Sunday 0950

8. Communication with Competitors

- 8.1 Committee Boats will make broadcasts and stand by on the following channels:

a) Committee Boat : VHF 72

- 8.2 The Race Committee will regularly broadcast its intentions for the day's schedule from one hour before the first scheduled warning signal.
- 8.3 The Race Committee may additionally transmit messages by other electronic means.
- 8.4 Additionally, the Race Committee may broadcast time checks prior to the first scheduled start of each day.

9. Identification

- 9.1 All boats with sail numbers shall provide that information at registration.
- 9.2 Boats without sail numbers may be provided with bow and stern numbers at registration and if provided they shall be clearly displayed on both sides of the bow and stern of the boat.

10. Classes and Class Flags

- 10.1 A list of classes and class flags and the appropriate flag for each regatta will be provided to each boat at registration.
- 10.2 Class flags provided shall be displayed prominently on the boat at the stern, preferably from the backstay.

11. Location, Schedule and Order of Starts

- 11.1 The planned schedule of races, location of the Committee Boats and the order of starts for the first race of the day will be posted by 1800 the day before each day of racing and may additionally be transmitted by electronic means. On the first day this will be at the Skippers Meeting.

- 11.2 Subsequent races will start as soon as possible after the end of the previous race, and the order and planned times of these starts will be announced by the Race Committee by VHF.
- 11.3 To alert boats that a race or sequence of starts will begin soon, the orange starting line flag may be displayed (with one sound) as an attention signal at least five minutes before the first warning signal.

12. Courses

- 12.1 Appendix A shows the courses.
- 12.2 The course to be sailed, will be announced by VHF before the preparatory signal for that class and may be transmitted by other electronic means in addition.

13. Marks

- 13.1 Start and Finish marks will be orange inflated marks.
- 13.2 Pre-set Marks will be one of:
- a) Orange or yellow inflated mark, some of which may display advertising, or
 - b) Permanent yellow Nature Reserve spar buoys on the French side of the island, or
 - c) The west cardinal mark in Marigot Bay
- 13.3 The colour of any laid inflatable mark will be provided by the Race Committee by VHF.
- 13.4 If a mark is missing, in addition to the provisions of RRS 34, it may be replaced by a small round orange mark.
- 13.5 If a mark of a gate is missing, the remaining mark shall be rounded on the same side as the previous mark
- 13.6 In addition to the provisions to RRS 33, the Race Committee will announce by VHF any change of mark description.

14. Course Restrictions and Obstructions

- 14.1 While racing, boat shall not enter the following areas which are hereby defined as obstructions:
- a) The entire area of Cole Bay between any yellow mooring or mark and the shoreline of Cole Bay.
 - b) The area between any yellow restriction mark in Maho Bay and the nearest shoreline.
 - c) The area between Mark X1 (Point Plum) and the nearest shoreline.
- 14.2 Any boat observed entering the areas listed in SI 14.1 may be disqualified without a hearing. This changes RRS 63.1.
- 14.3 After rounding the first mark boats are prohibited from crossing the finish line apart from finishing.

15. The Start

- 15.1 The start line will be between an orange flag or shape on the Committee Boat for the class and an orange start mark.
- 15.2 A boat starting later than 10 minutes after the last starting signal in a sequence of consecutive starts in which her class started will be scored Did Not Start (DNS) without a hearing. This changes RRS A4 and A5.

Starting order

- 1. Racing class - Pink class flag
- 2. Cruising class - Yellow Class flag
- 3. Beach cat class - Green Class Flag

- 15.4 Beach cat class will not start before 9:50

16. The Finish

16.1 The finish line will be between a staff displaying a blue flag on a Committee Boat and a nearby yellow finish mark.

17. Penalty System

17.1 The Two-Turns Penalty is replaced by the One-Turn Penalty, changing RRS 44.1.

18. Time Limit

18.1 For all classes, the time limit will be:

- a) 15:30 for the last race of any day.
- b) When two races are held on a day the time limit for the first race of the day will be one hour after the first boat finishes in her class.

19. Protests and Requests for Redress

19.1 Protest forms are available online. Protests and requests for redress or reopening shall be delivered to the following mail address and shall request a confirmation of receipt within the appropriate time limit. The mail address is leonde@smyc.com.

Handwritten forms can be photographed and attached. Bridge opening times and the return of boats to moorings will not normally be considered as a reason to extend a protest time limit.

19.2 Protest Time Limit. For each competitor, the protest time limit is the earlier of one hour after the protesting boat's finish time or on any race day of scheduled racing : 16:00

19.3 Notices will be posted online to inform competitors of hearings in which they are parties or named as witnesses. Hearings will be held in the protest room or, located at the SMYC or in case of too many people, in the bar area of the SMYC. The hearings will begin at the time posted.

19.4 Notices of protests by the Race Committee, Technical Committee, or Jury will be posted online to inform boats under RRS 61.1b).

19.5 Appendix T Arbitration will apply to this regatta amended so that an arbitrator may be part of a protest committee in a subsequent protest. When all parties are present at the Protest Desk, every reasonable effort will be made to begin arbitration under RRS Appendix T, or to hold a hearing as soon as possible, even if it is prior to the end of protest time.

19.6 Measurement Protests

- a) No measurement or rating protest may be lodged by any competitor after their protest time limit on the first day of scheduled racing. This changes RRS 60.1 a).
- b) If at any time prior to the last protest time limit on the final day of scheduled racing the Regatta Measurer finds that an error exists in a measurement certificate, he will file a request for redress. If the Jury is satisfied that the certificate is in error, the measurer will reissue the certificate and all affected races in the regatta will be re-scored using the new certificate. This changes RRS 78.3.

20. Scoring of Races

- a) One race is required to be completed to constitute a series.
- b) For each class, when fewer than 5 races have been completed, a boat's series score will be the total of her race scores.
- c) For each class, when 5 or more races have been completed, a boat's series score will be the total of her race scores excluding her worst score.

Appendix A

Marks

1	Orange tetrahedron mark approximately 0.5 mile windward of start line	
2	Orange mark approximately 0.5 mile leeward of start line	
3	Yellow Cable marker in Philipsburg.	
	Furthest one out (of the three yellow buoys)	[18° 00.616'N 63° 03.583W]
04	Mark of point in Baie Longue	[18° 03.700'N 63° 09.450W]
05	Mark 0.5 mile south west of Creole Rock	[18° 06.959'N 63° 03.691W]
06	West Cardinal buoy marking Proselyte Reef	[17° 59.365'N 63° 03.682'W]
12	Cardinal mark bouy 0.5nm W of point Arago	[18° 05.300'N 63° 05.690'W]
37	Mark 0.8nm south of Simpson Bay	
Pelican	Pelican Rock	[18° 01.100'N 63° 01.130'W]
Molly Beday	Molly Beday, Group of rocks and reefs running 0.3nm.	
	Including submerged rock	[18° 01.240'N 62° 59.720'W]
Ile Tintamare/		
Flat Island	Island NE of St Martin approx. 2.5km x 1 km	[18° 07.200'N 62° 58.780'W]
X1	Orange mark Point Plum (stay outside the mark)	[18° 04.290'N 63° 09.010'W]

Courses Caribbean Multihull Challenge 2021 – SAT 6 & SUN 7 FEBRUARY

Head of Land and Back 1 (HL1)

CMC start line Simpson Bay
37 round to starboard
04 round to port
37 round to port
1 round to port
Finish CMC start/ finish Simpson Bay

St. Barths 1 (STB 1)

CMC start line Simpson Bay
37 round to port
Molly Beday round to starboard
06 Proselyte mark round to starboard
37 round to starboard
1 round to port
Finish CMC start/ finish Simpson Bay

Head of Land and Back 2 (HL 2)

CMC start line Simpson Bay
37 round to starboard
04 round to starboard
05 Mark at Creole rock round to starboard
04 round to port
37 round to port
1 round to port
Finish CMC start/ finish Simpson Bay

St. Barths 2 (STB 2)

CMC start line Simpson Bay
37 round to port
Molly Beday round to starboard
04 round to port
37 round to port
1 round to port
Finish CMC start/ finish Simpson Bay

Head of Land and Back 3 (HL 3)

CMC start line Simpson Bay
37 round to starboard
04 round to starboard
12 round to starboard
04 round to port
37 round to port
1 round to port
Finish CMC start/ finish Simpson Bay

St. Barths 3 (STB 3)

CMC start line Simpson Bay
37 round to port
Flat Island round to port
06 Proselyte Mark round to starboard
37 round to starboard
1 round to port
Finish CMC start/ finish Simpson Bay

Courses Caribbean Multihull Challenge 2021 – SAT 6 & SUN 7

St. Barths 4 (STB 4)

CMC start line Simpson Bay

37	round to port
Pelican	round to port
06 Proselyte mark	round to starboard
37	round to starboard
1	round to port

Finish CMC start/ finish Simpson Bay

Under the Land 1 (UL 1)

CMC start line Simpson Bay

37	round to port
06 Proselyte mark	round to starboard
04	round to port
37	round to port
1	round to port

Finish CMC start/ finish Simpson Bay

Ocean Racing 1 (OR 1)

CMC start line Simpson Bay

37	round to port
Pelican	round to port
05	round to starboard
04	round to port
37	round to port
1	round to port

Finish CMC start/ finish Simpson Bay

Course A (F18)

CMC start line Simpson Bay

1	round to port
2	round to port
1	round to port
2	round to port
1	round to port

Finish CMC start/ finish Simpson Bay

Course B (F18)

CMC start line Simpson Bay

1	round to port
2	round to port
1	round to port
2	round to port
1	round to port
2	round to port
1	round to port

Finish CMC start/ finish Simpson Bay

Course C (F18)

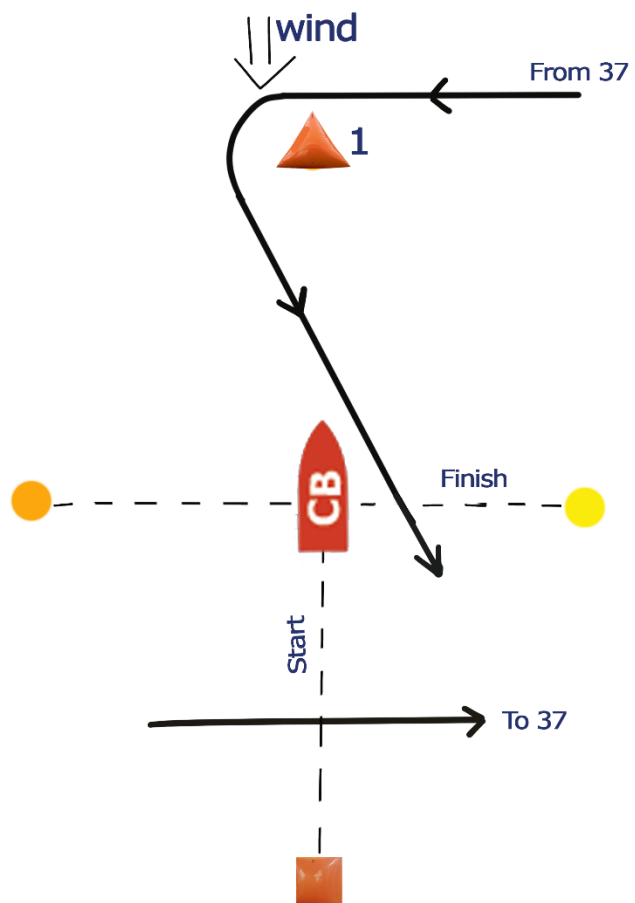
CMC start line Simpson Bay

1	round to port
2	round to port
3	round to port
1	round to port
2	round to port
1	round to port

Finish CMC start/ finish Simpson Bay

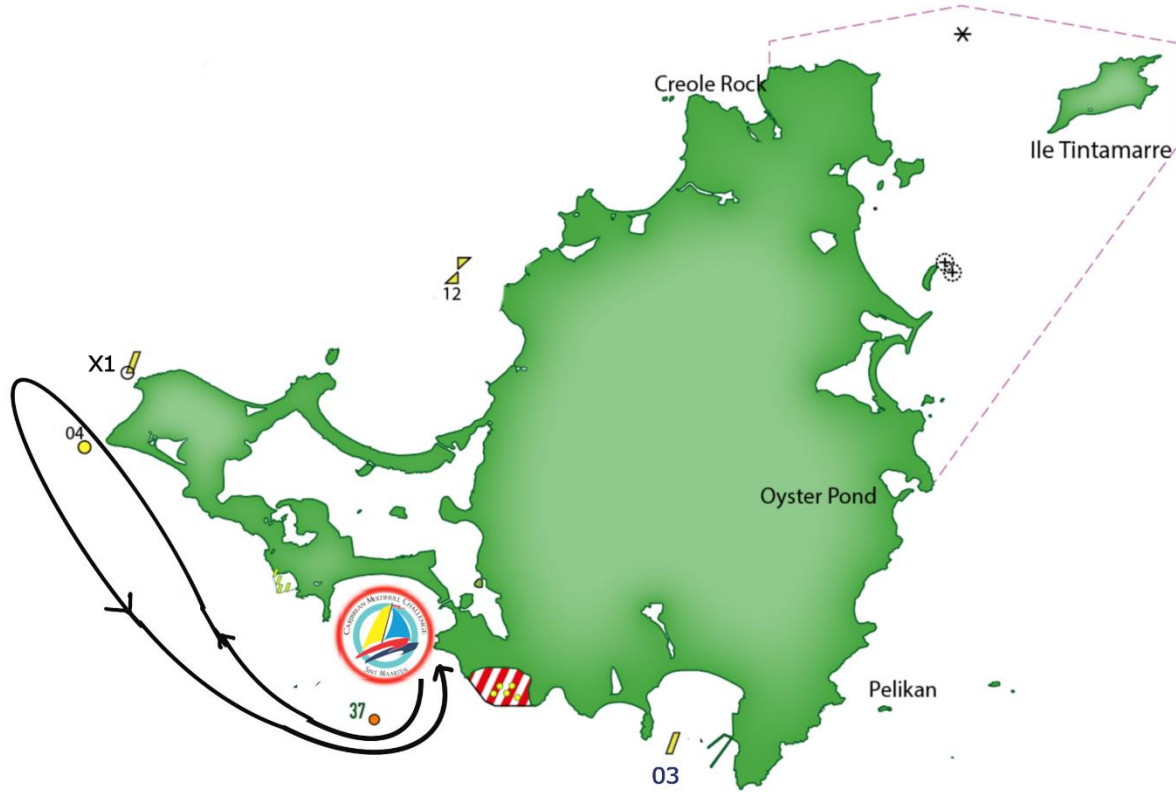
RACING AND CRUISING CLASS

STARTING AREA





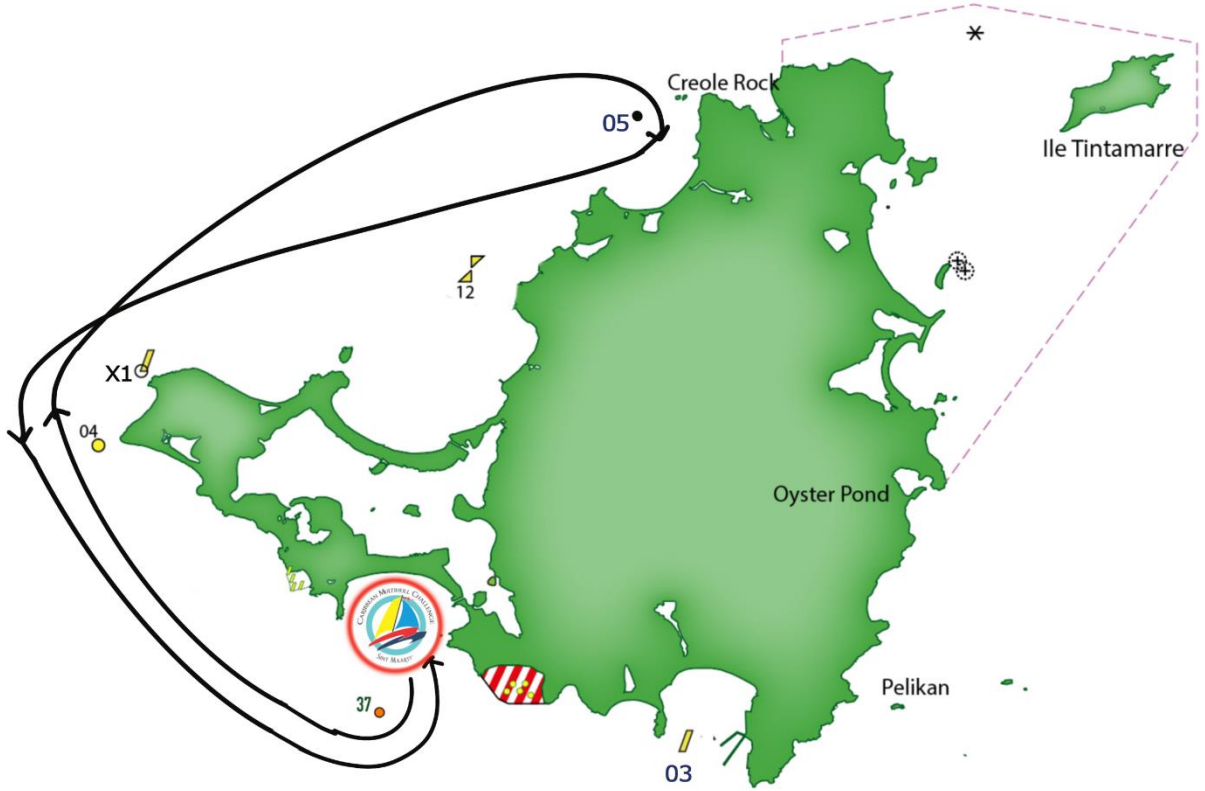
HL1



starting area
see Appendix A

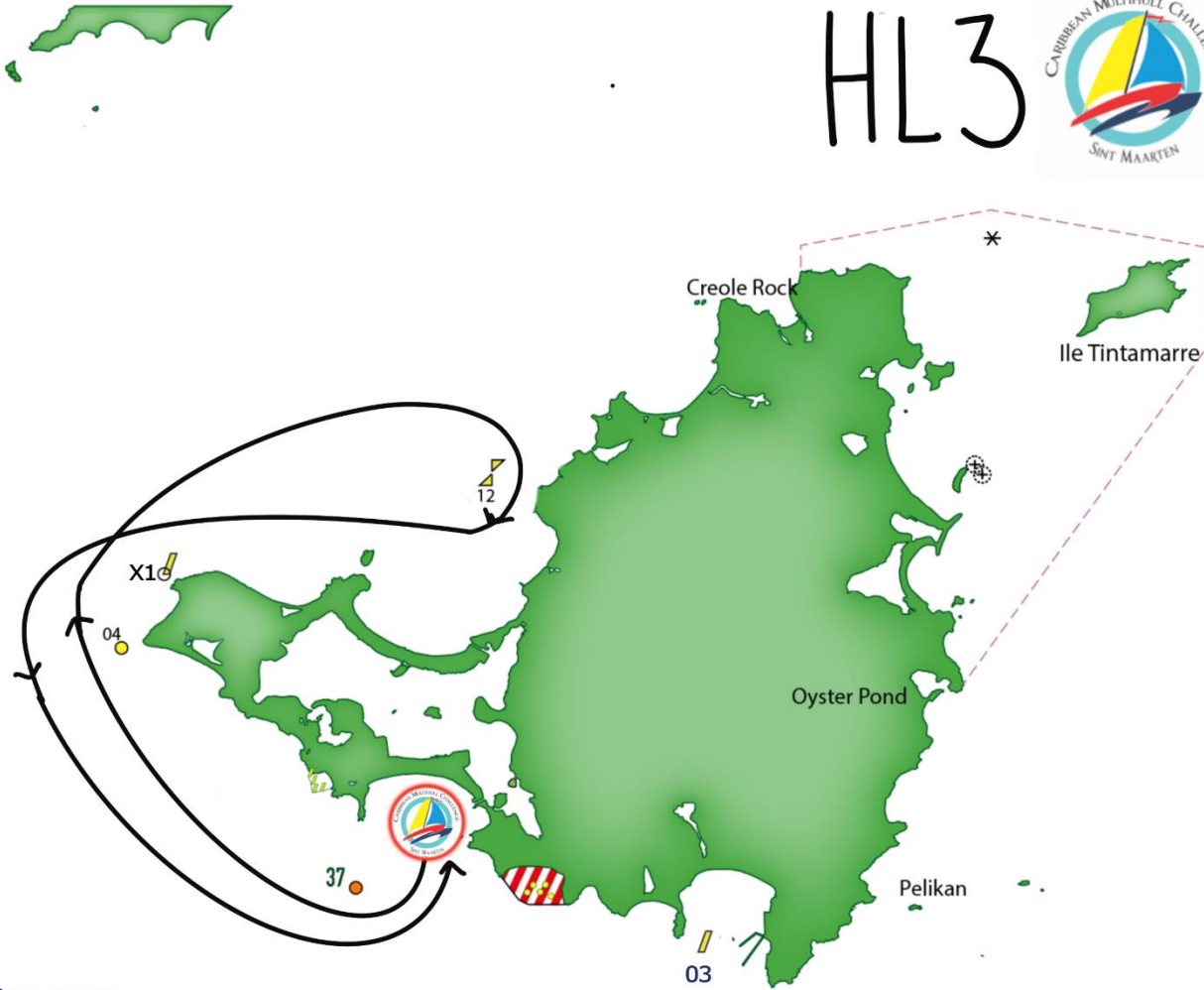


HL2



starting Area
see Appendix A

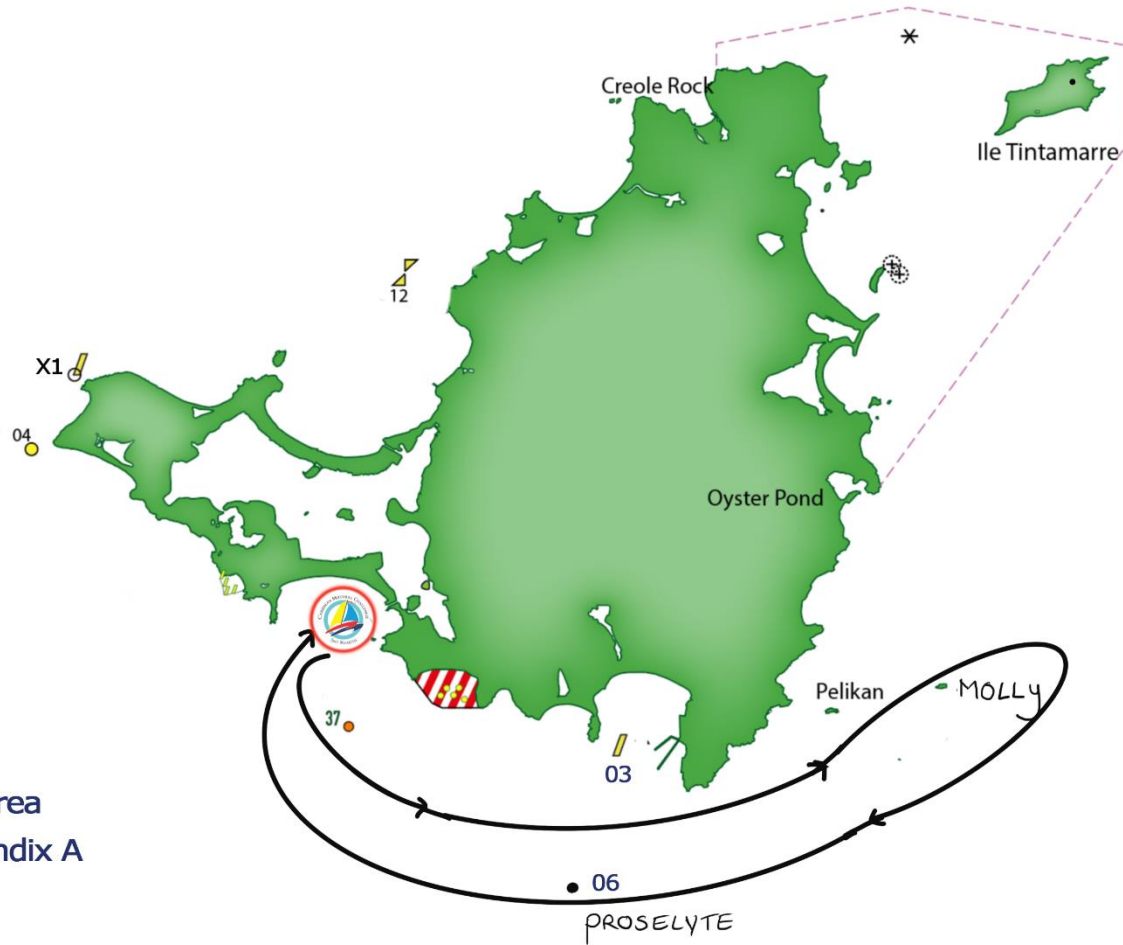
HL3



starting area
see Appendix A



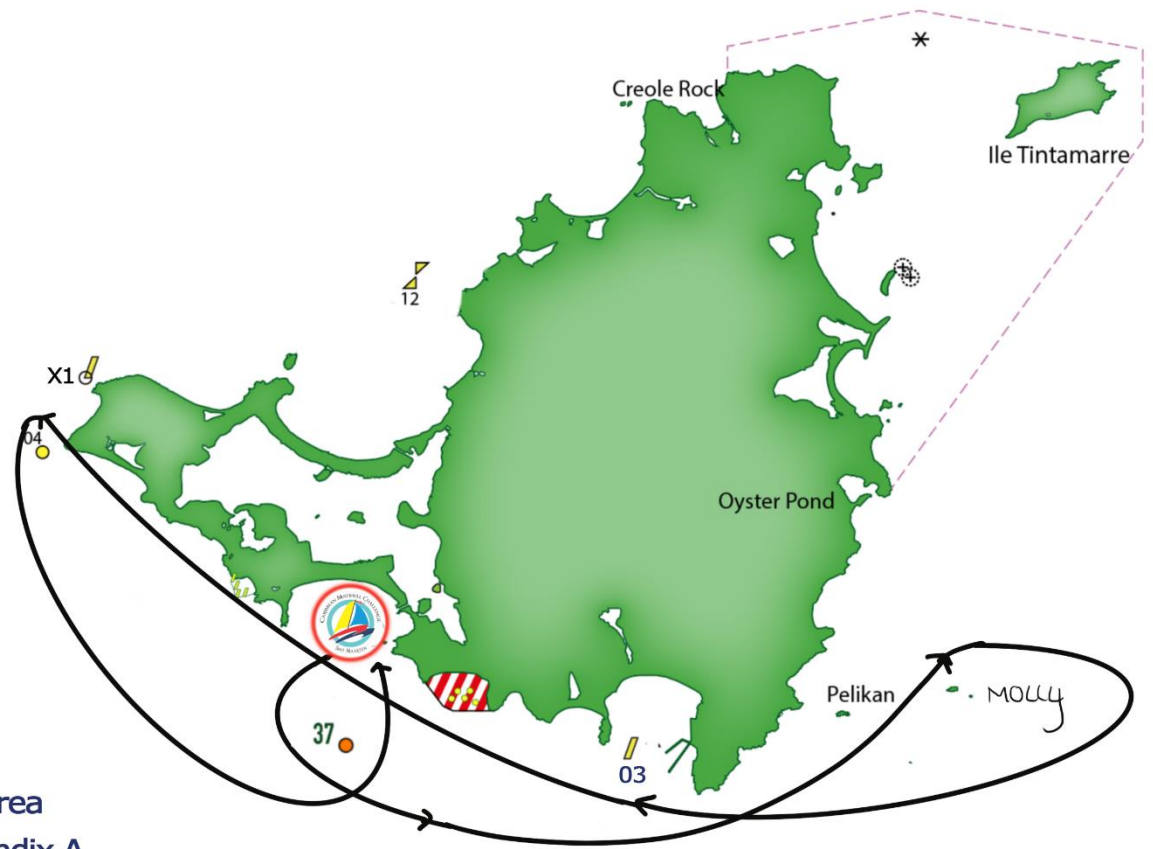
STB1



starting area
see Appendix A



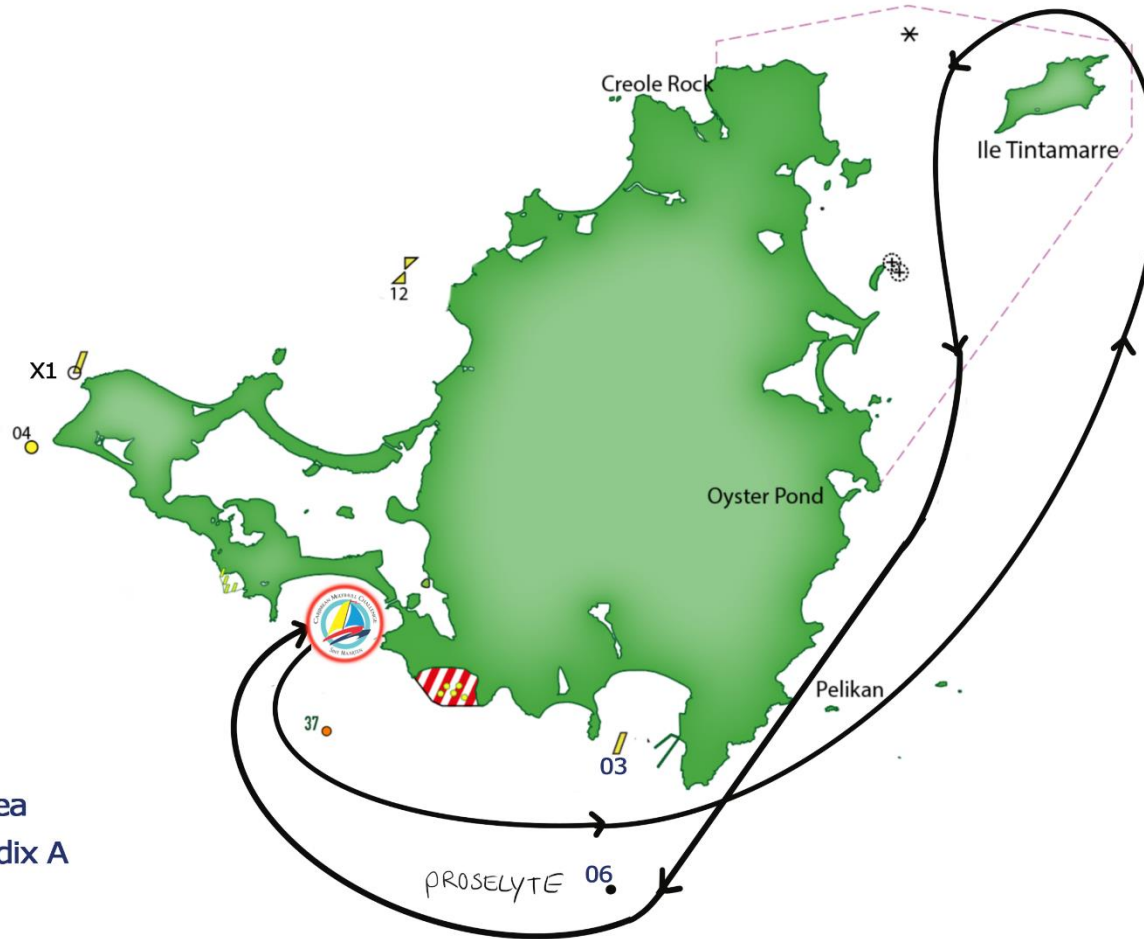
STB2



starting area
see Appendix A

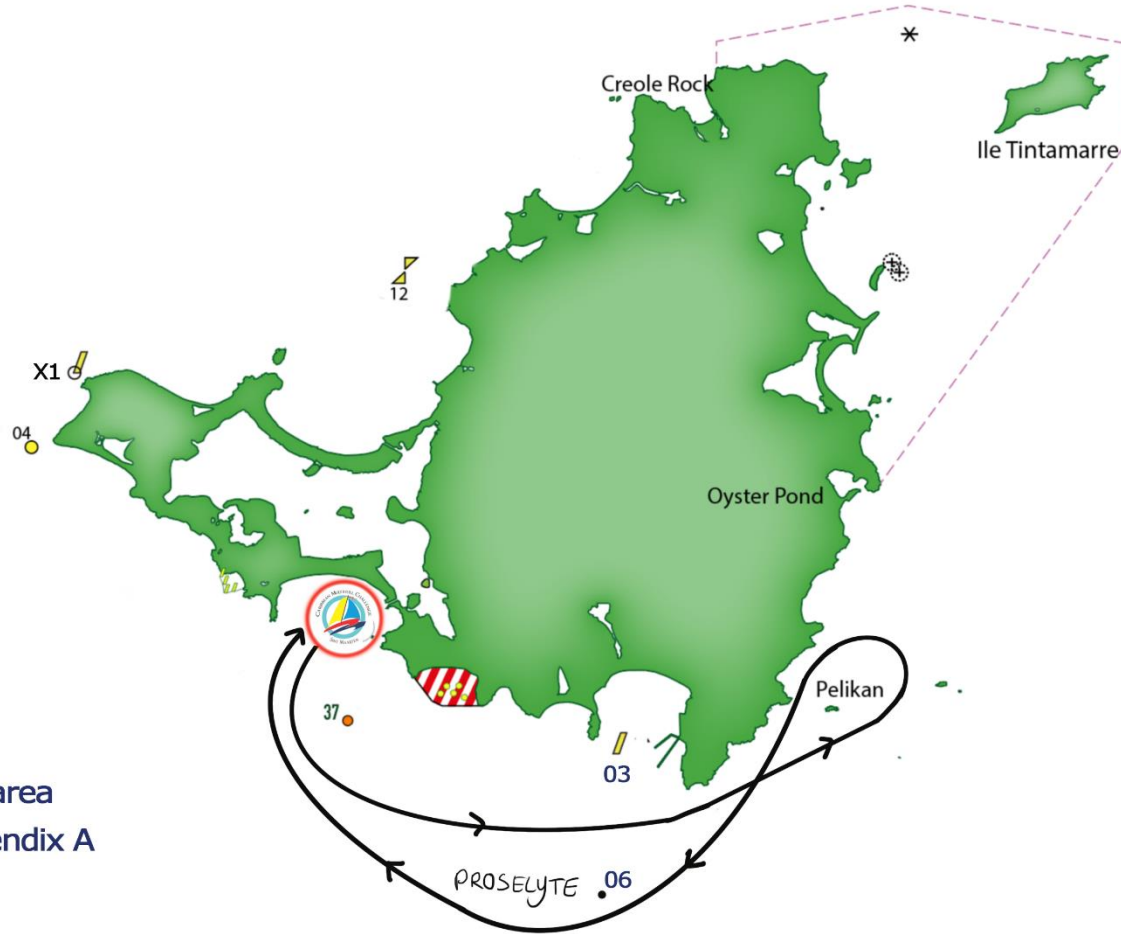


STB3



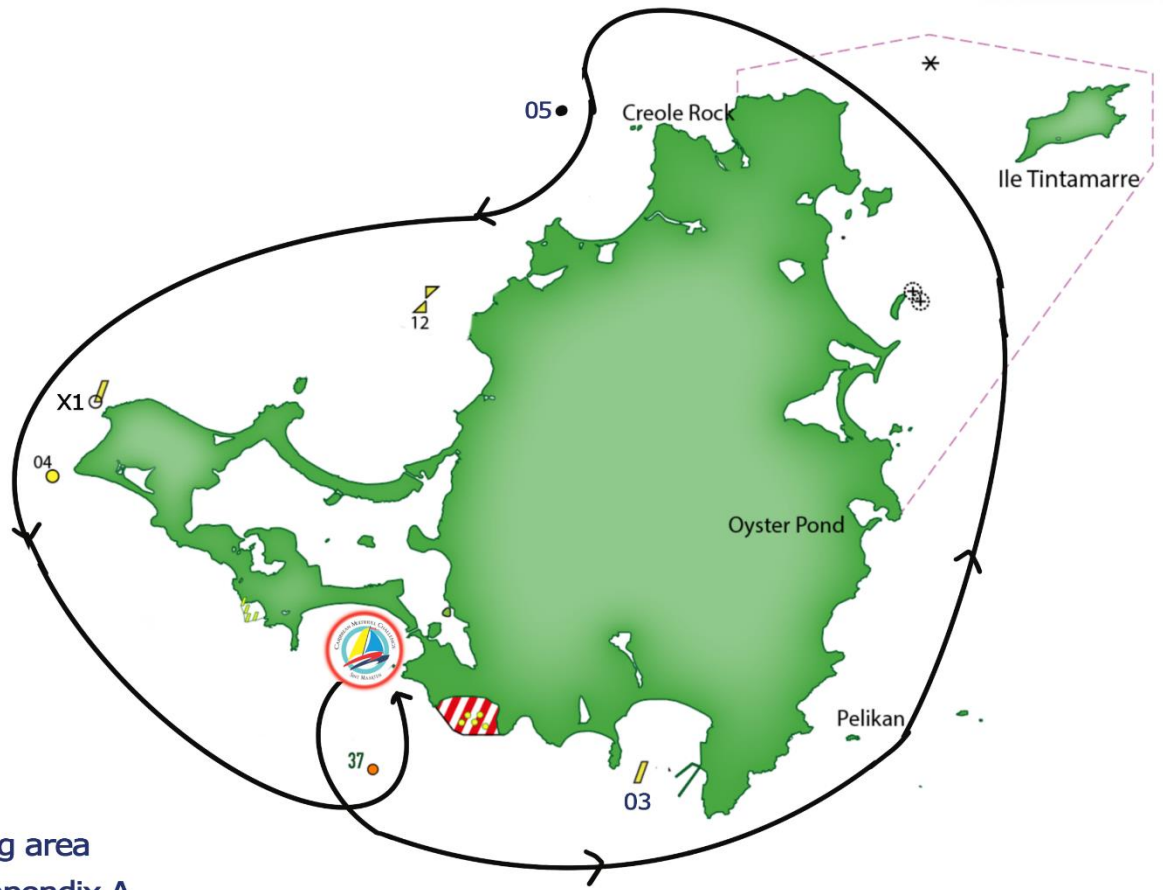


STB 4



starting area
see Appendix A

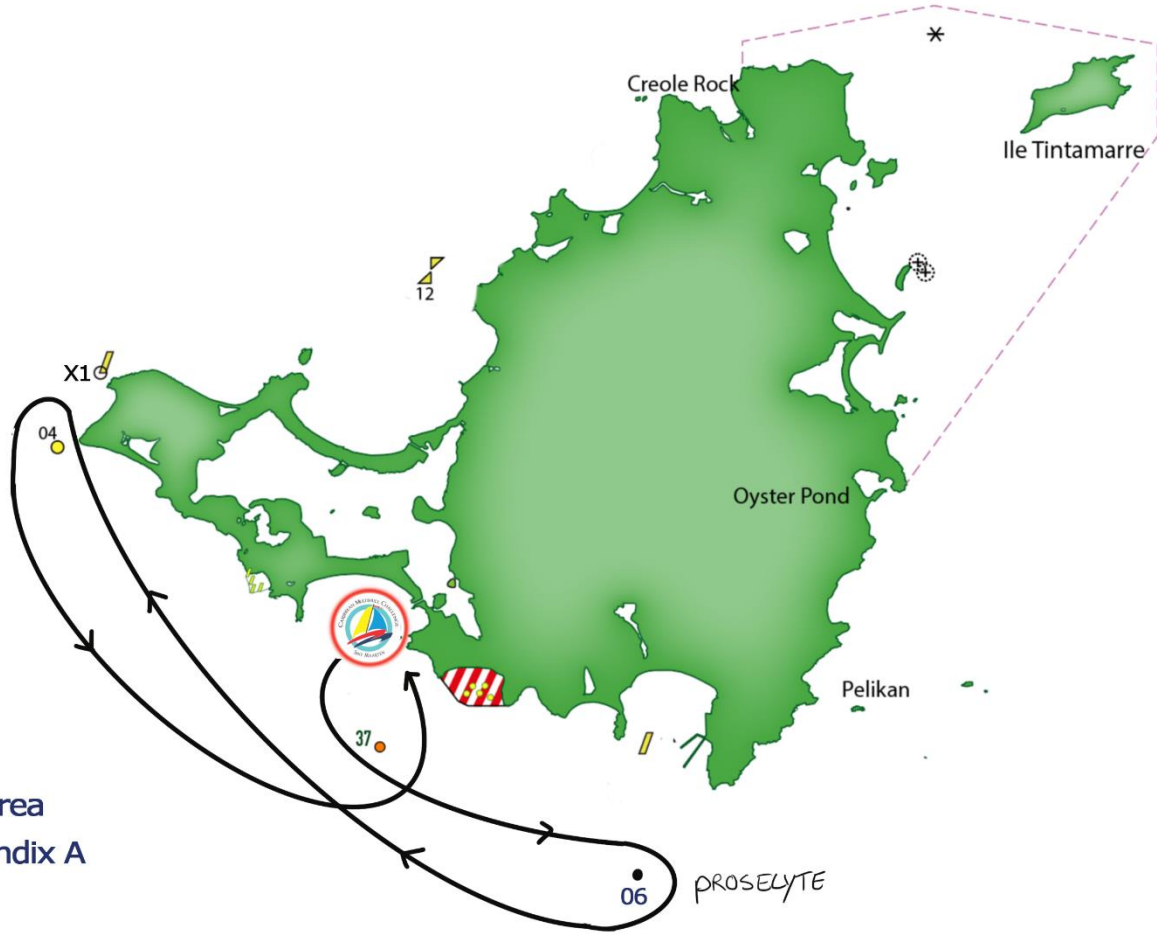
OR1



starting area
see Appendix A

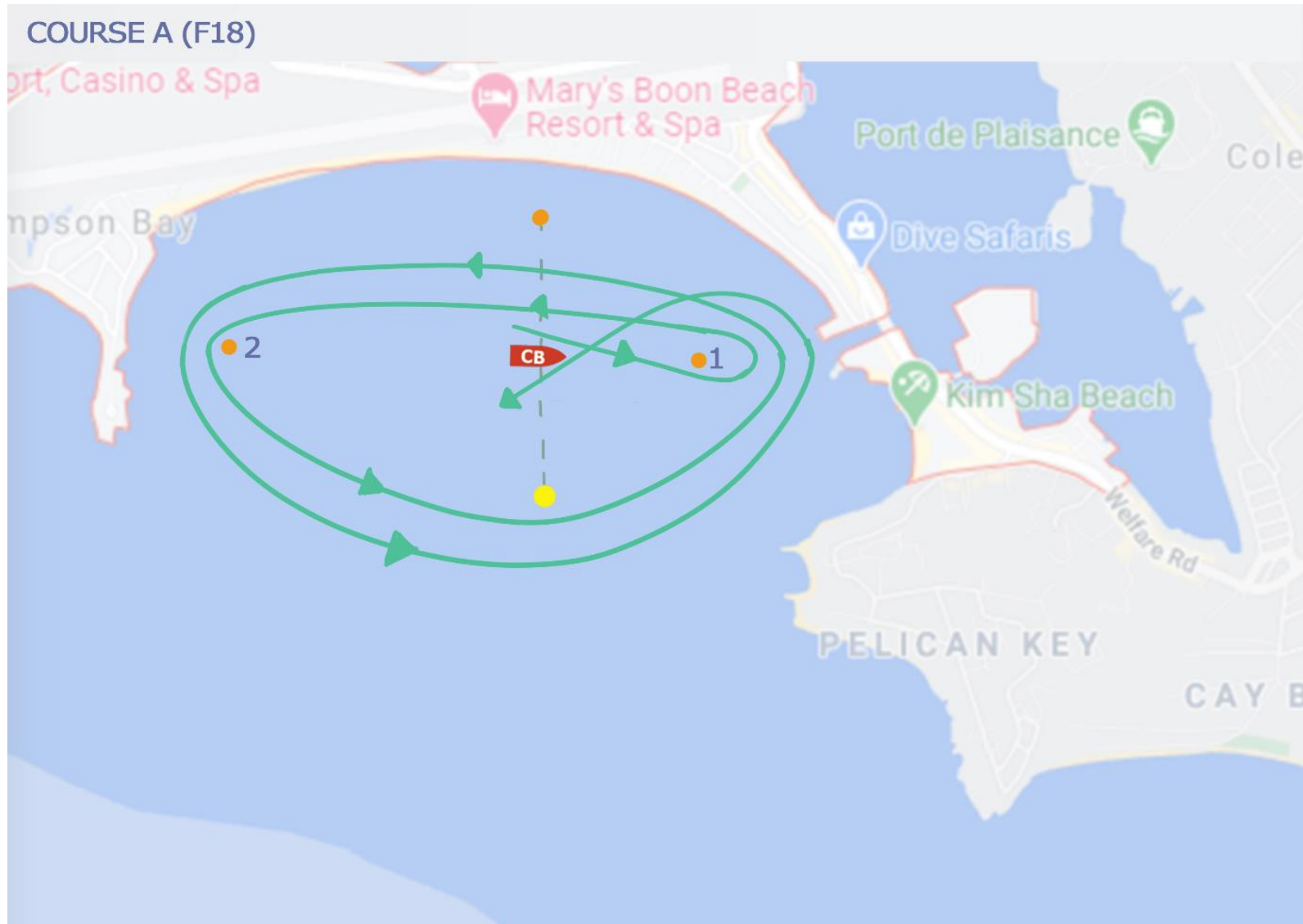


UL1

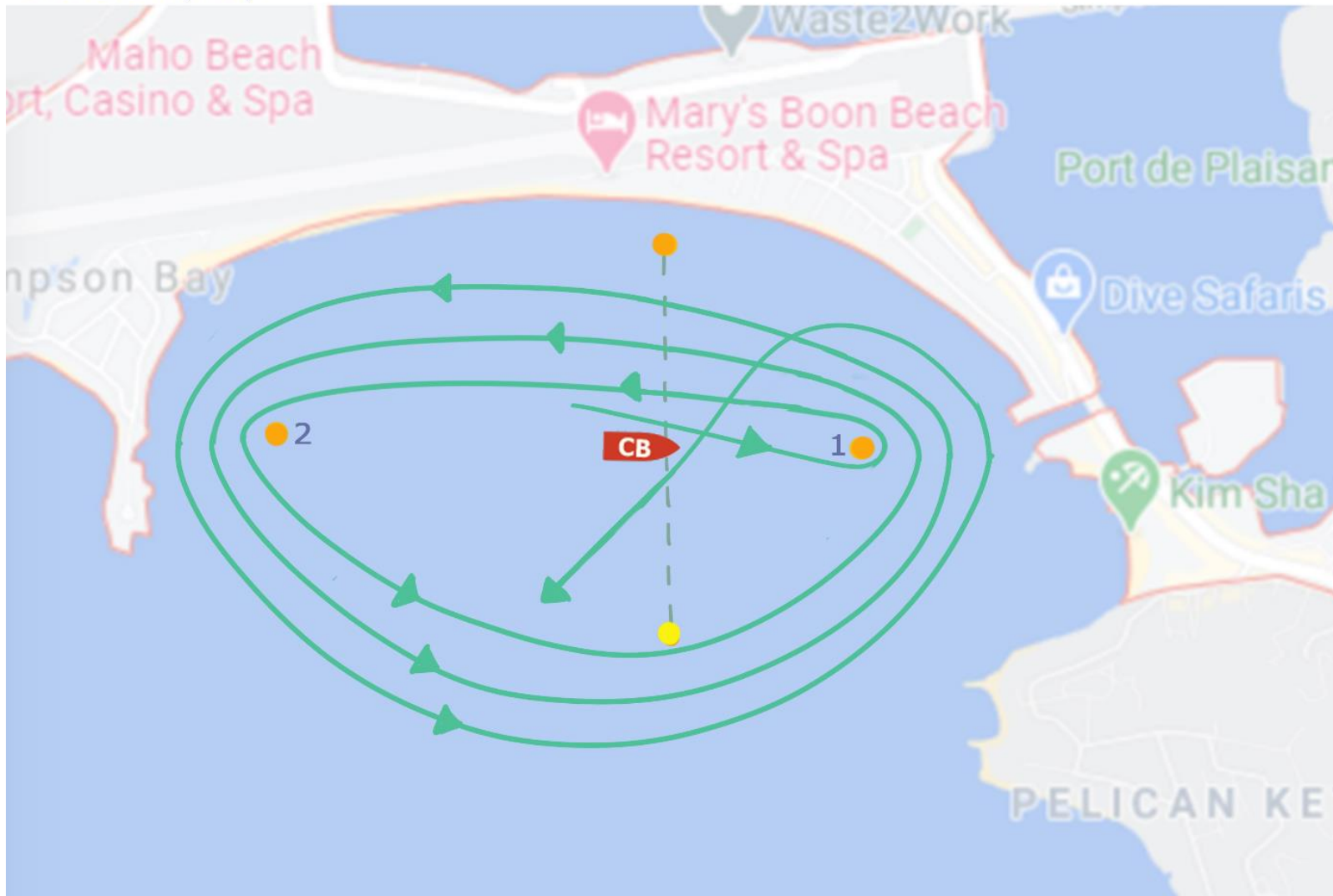


starting area
see Appendix A

BEACH CAT CLASS



COURSE B (F18)



COURSE C (F18)

